

# SPEC SHEET + MEASUREMENTS

## Product photo



PORT AUTHORITY.

## Port Authority® Breakwater 1/4-Zip Pullover. K820

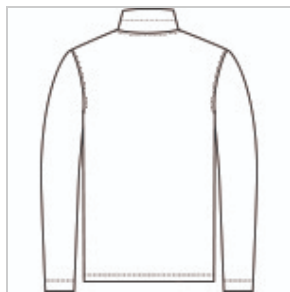
This 1/4-zip, with its subtle slub texture, offers a lightweight layering option for the office or any casual setting.

- 6.3-ounce, 60/40 cotton/polyester
- Cadet collar with topstitch detail
- Covered dyed-to-match coil zipper with metal pull (Parchment has a dyed-to-match pull)
- Forward shoulder
- Set-in sleeves
- Self-turned cuffs and hem

## Sketches



front



back

## CARE INSTRUCTIONS

Machine Wash Cold With Like Colors. Do Not Bleach. Tumble Dry Low. Remove Promptly. Cool Iron If Necessary.

# Product Measurements

	XS	S	M	L	XL	2XL	3XL	4XL
<b>Body Length at Back</b>	26 1/2	27 1/2	28 1/2	29 1/2	30 1/2	31 1/2	32	32 1/2
<b>Chest</b>	18 1/2	20	21 1/2	23	24 1/2	26	28	30
<b>Sleeve Length from Center Back</b>	33 3/8	34	34 5/8	35 1/4	35 7/8	36 1/2	37 1/4	38

**Body Length at Back:** Measured from high point shoulder to finished hem at back.

**Chest:** Measured across the chest one inch below armhole when laid flat.

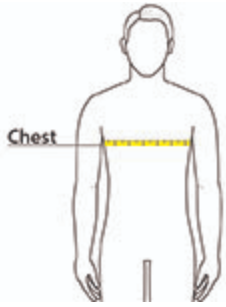
**Sleeve Length from Center Back:** Measure from Center Back neck to shoulder point to sleeve hem.

## Size Chart

	XS	S	M	L	XL	2XL	3XL	4XL
<b>Chest</b>	32-34	35-37	38-40	41-43	44-46	47-49	50-53	54-57

## How To Measure

### Chest



Measure under the arm and around the fullest part of the chest with arms down, keeping tape horizontal.

## Colors

**Please note: PMS code information is shown only when an exact match is available.**



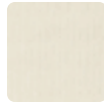
Deep Black  
PMS BLACK  
C



Dusk Blue  
PMS 2374C



Grey Steel  
PMS 426C



Parchment