



District® Women's Perfect Tri® Rocker Tank. DT137L



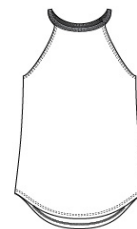
Turn up the volume in this tank with its perfect mix of softness and attitude.

- 4.5-ounce, 50/25/25 poly/combed ring spun cotton/rayon, 32 singles
- 2X1 rib knit at neck
- Tear-away label
- Curved hem

Tri-Blend fabric infuses each garment with unique character. Please allow for slight color variations. Due to the heat sensitivity of tri-blend fabrics, special care must be taken throughout the printing process. Consult your decorator or ink supplier for best printing practices.

CARE INSTRUCTIONS

Machine wash cold, with like colors. Only non-chlorine bleach. Tumble dry low. Warm iron if necessary.

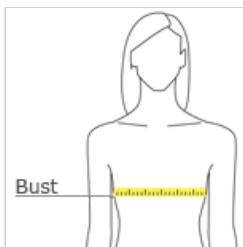


front



back

HOW TO MEASURE



BUST
Measure under the arm and around the fullest part of the bust with arms down, keeping tape horizontal.

SIZE CHART

	XS	S	M	3XL	4XL	L	XL	XXL
Size	2	4/6	8/10	24/26	28/30	12/14	16/18	20/22
Bust	32-34	35-36	37-38	48-51	52-55	39-41	42-44	45-47

COLOR INFORMATION

Please note: PMS code information is shown only when an exact match is available.



Black
PMS BLACK C



Black Frost
PMS 426C



Blush Frost
PMS 2341C



Desert Tan Heather
PMS 4269C



Grey Frost
PMS COOL GREY 11C



Heathered Eucalyptus Blue
PMS 7475C



Military Green Frost
PMS 7771C



Navy Frost
PMS 2379C



Red Frost
PMS 200C



White